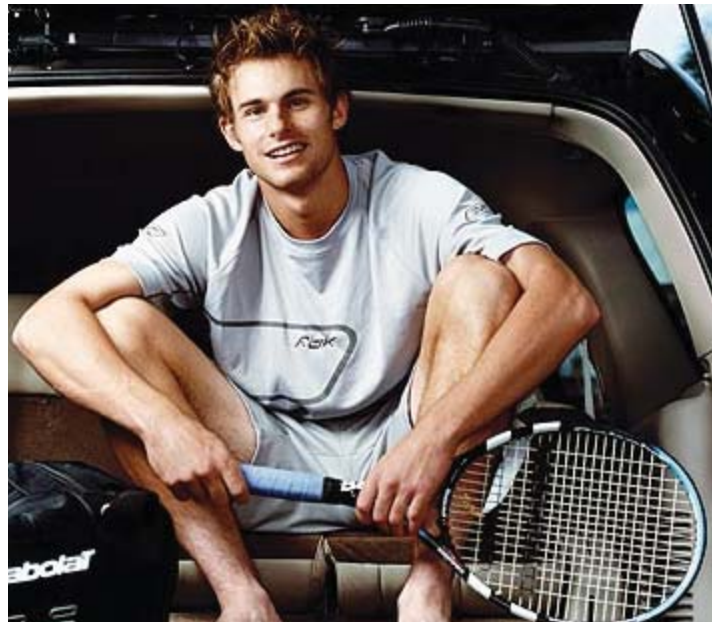


Join the BU Tennis Club!!

Who: Tennis players of **all** skill levels - from beginners to advanced players. Members include students, alumni, faculty, staff, and guests. So far we have about 50 people in the club!

What: Join us for hitting practice, singles, doubles, mixed doubles, etc.!



When: We play several times a week and you can play as often or as little as you like. Check the website below for times.

Where: Student Recreation Center when it's cold (November to mid-March), then upper campus courts when it's warm (mid-March - October). Check website for location.

How: Just show up during our playing times, and we'll get you on the court. Bring your racquet if you have one. To be added to the e-mail list, e-mail trumboug@bloomu.edu.

Why: It's a fun way to exercise, you'll meet lots of people, and we have a great time!

Contact: If you are interested in joining the BU Tennis Club, call Tim Rumbough - Club Advisor at 570-389-0397 or e-mail trumboug@bloomu.edu

Questions? More information and the playing schedule is available at:

<http://orgs.bloomu.edu/tennisclub>
